

Logiscan Cargo

Automatic control system of weight and measures of cargo boarding packages



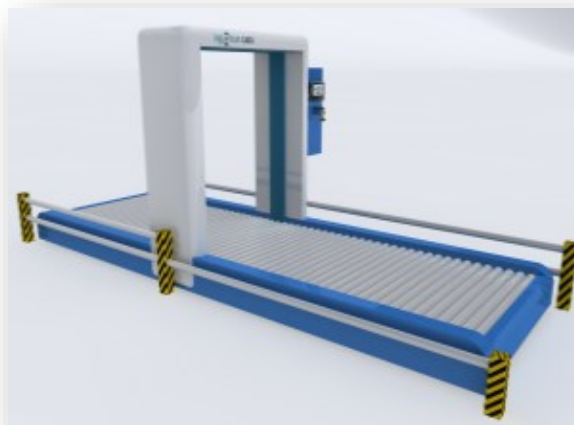
logi  scan CARGO

The family of **Logiscan-Cargo** comes from the experience of Airlogs in the Airport sector. The primary purpose is to provide solutions for dimensional and weight control by the operators of the sector, offering a solution that brings and a very fast payback of the investment made.

Logiscan-Cargo VOLUME uses a series of cameras TOF (Time Of Flight) synchronized with each other to obtain a three-dimensional scan.

The software of the system allows a real-time processing for the calculation of the "bounding box", and then returning the maximum height of the package and its tenure in the plant.

Logiscan-Cargo CONTOUR uses a series of laser scanners synchronized with each other to obtain a three-dimensional scan through a cloud of points. The software of the system allows a real-time



processing for the identification of any out-of-tolerance parameters, such as excess weight or oversized dimensions.

2B Control Srl

Via Prati 1/1 – Ponte Ronca
40069 Zola Predosa
Bologna, Italy
vat 03653591200

phone +39 051 6516716
fax +39 051 6516719
info@2bcontrol.com
www.2bcontrol.com

2B  CONTROL

Precision

The structures are designed and built to achieve the highest levels of precision that the available technology allows.

Customization

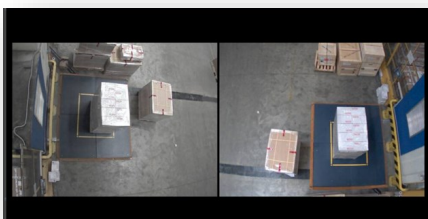
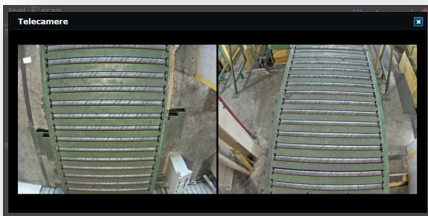
The **Logiscan CARGO** systems can be supplied both in the complete version (measuring bridge, roller conveyor, weigh ...) and in the OEM version to be installed on the existing architecture. The dimensions can be adapted to the real needs of the customer.

Quality

The high quality standards are a guarantee of long life and promote routine maintenance.

Control

The system can also be easily controlled remotely through the equipped cameras, which are also used to create a historical photo archive of the measured packages.



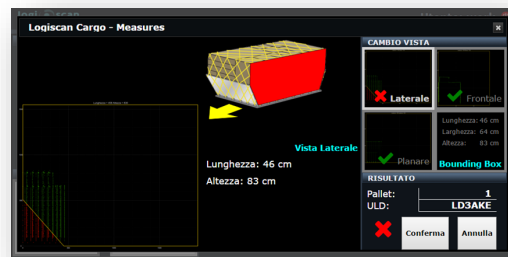
Analysis Software

The structures are designed and built to achieve the highest levels of precision that the available technology allows.

Logiscan CARGO CONTOUR

The software algorithms of three-dimensional analysis are able to calculate the measurements of the neck and to detect any "out of shape" with respect to reference profiles (ULD), highlighting the protruding points in the three orthogonal representations.

The System is supplied with a pre-coded profile library (ULD), which can be completed and integrated by the customer.



Logiscan CARGO VOLUME

The software algorithms of three-dimensional analysis calculate the measurements of the neck and allow to define any tare both in terms of size and weight. The application is fully compatible with the use on tablets by operators.



Logiscan CARGO helps companies to optimize the management of processes related to the measurement and weight of packages in an innovative way, in order to reduce time, make better use of resources and guarantee a significant reduction in errors.



Airlogs Technology

Airlogs is an innovative start-up of 2B Control-Logital Group.

It assists companies to effectively use the most innovative technologies that will ensure significant competitive advantages.

Airlogs is also focused on researching and developing clever solutions by combining the unique and creative software applications with the design of critically responsive hardware products.

The team at Airlogs is composed of skilled and highly experienced individuals. They can easily develop and provide solutions towards addressing industry issues by relying on their expertise in innovative technologies. This is possible because they have the ability to understand the complex needs of customers and provide designs that are most suitable in providing long term solutions.

Hand Baggage
Weight & Size
Checking



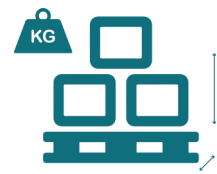
Hold & Hand
Baggage Tracking



Cargo Shape Detection



Pallet Weight &
Volume
Measurement



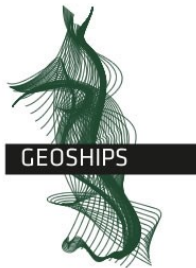
2BControl Group 2018

From the experience gained both by LIGHTHOUSE and Logital born 2BControl, in order to enhance technological know-how and widespread presence in the world by creating a highly competitive and cutting-edge offer.

LIGHTHOUSE

Thinking Ahead. Staying One Step Ahead.

Geophysical, geotechnical,
environmental survey, positioning
provider



Vessel management

LOGITAL

Software and system integration

LOGITAL

D I G I T A L M E D I A

Hardware and firmware engineering
and production

airlogs

Airport solutions for passenger and
cargo areas



2B Control World Network

2B Control Srl

Via Prati 1/1 – Ponte Ronca
40069 Zola Predosa
Bologna, Italy
vat 03653591200

phone +39 051 6516716
fax +39 051 6516719
info@2bcontrol.com
www.2bcontrol.com

2B CONTROL