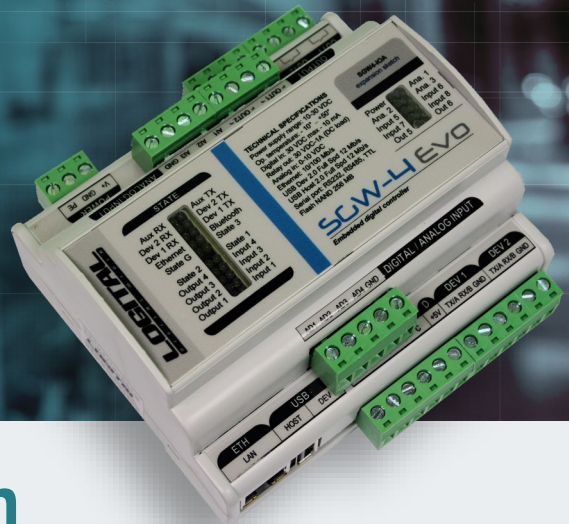


Always alert

Anti-intrusion Security
in an integrated PSIM
environment

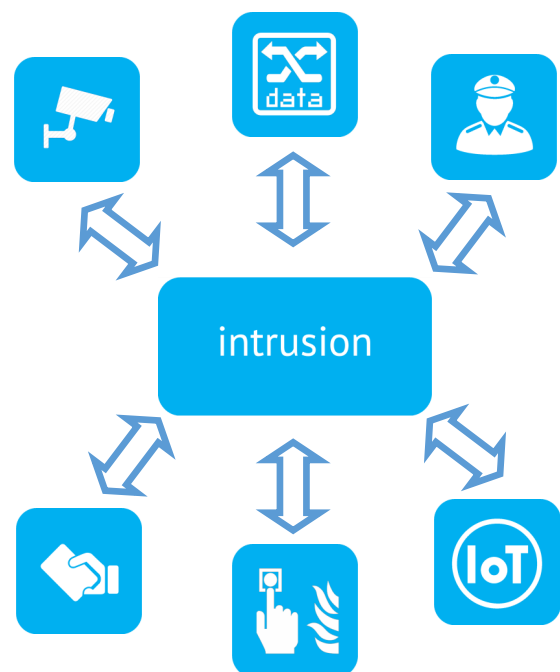


Guardian Anti-Intrusion

25 years of experience in data security and centralization, make **GUARDIAN's Anti Intrusion** module a point of reference on the market. The direct experience in the field and more than 5,000 connected buildings, have made the system grow, making it respond to all the needs that customers have shown over the years.

The module operates in compliance with CEI 79 regulations, allowing the total and bi-directional management of physical security systems. One of the most important prerogatives of the Anti Intrusion module is to operate within the **GUARDIAN Kernel** platform, exponentially enriching its potential thanks to the total integration and interoperability with other applications, first of all the VMS (Video Management System).

The alarm event generated by the system does not remain a simple signal, but is enriched with all the connected elements that allow immediate and efficient management.



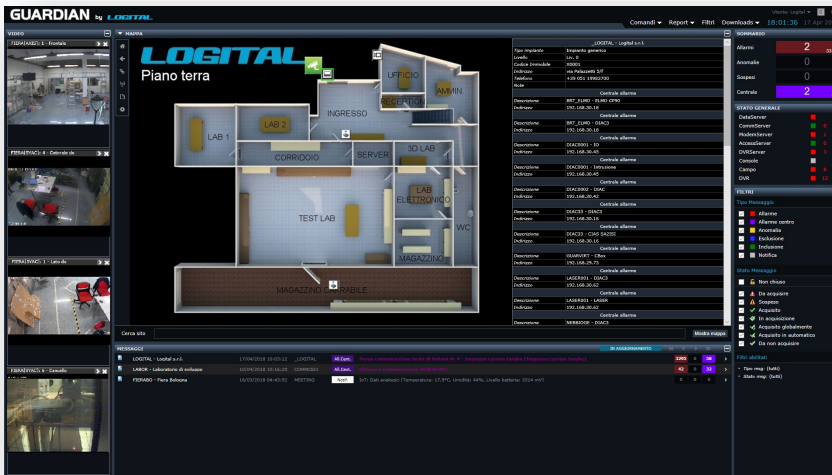
2B Control Srl

Via Prati 1/1–Ponte Ronca
40069 Zola Predosa
Bologna, Italy
vat 03653591200

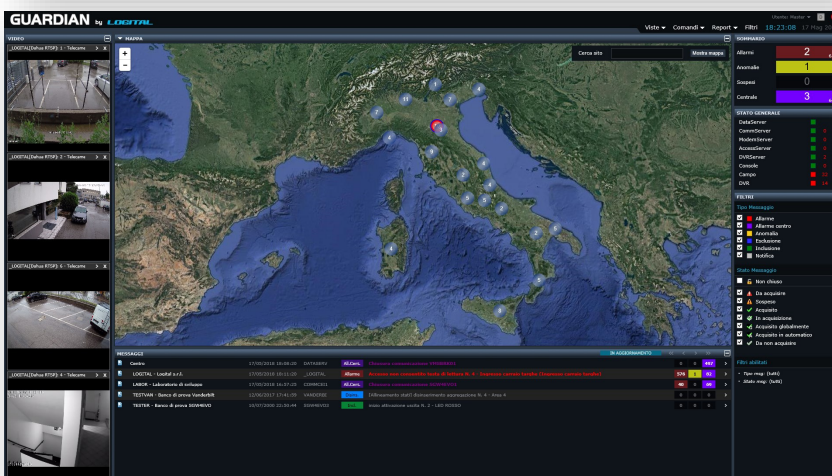
phone +39 051 6516716
fax +39 051 6516719
info@2bcontrol.com
www.2bcontrol.com

2B CONTROL

In the case of devices with proprietary protocol, field data conversion is performed using the **SGW4-EVO** device, able to communicate with the control center in all wired and wireless modes, such as Ethernet and WIFI with TCP / IP protocol, Mobile (GPRS, 3G, NB1) and LoRa with radio link to a dedicated gateway. The device is also equipped with digital and analog I / O, as well as communication ports capable of executing any type of connection.



The user interface is immediate, and has been designed to always offer the best visual impact on reports generated and data visualization. The module allows you to graphically modify the configuration of the peripheral systems and field devices directly from the central station.



The new information is distributed on all the central servers which are responsible for forwarding to the stations located throughout the territory and to the devices. It is possible to send configurations to alarm panels, NVR, video matrixes and, in general, to all CEI devices or the protocol of which has been made available.

With the **GUARDIAN Anti Intrusion** module we are able to communicate with most of the burglar alarm systems available on the market, and with the simple implementation of a driver it is possible to enrich this library by extending it to any device.

The visualization console, operating in a web environment, offers the possibility to create dedicated views for mobile devices, keeping full operation. Tablets and mobile phones can become points of access to the system for consulting the state of security and for real-time intervention on the plants.

