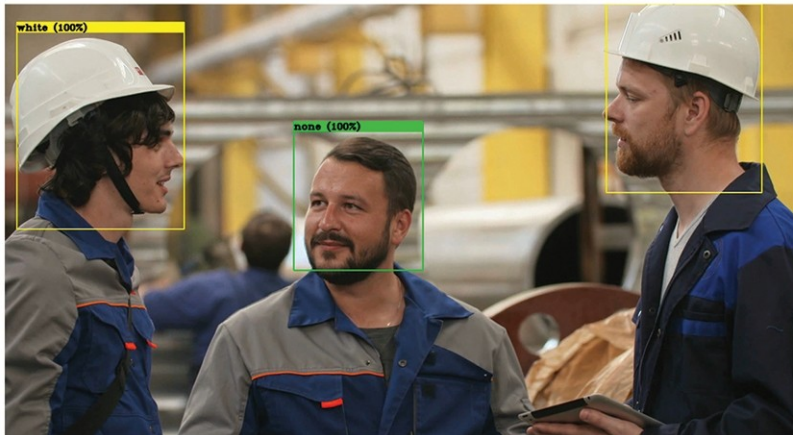


# SAFETYCHECKER

The people's safety inside the industrial plants is a crucial factor to ensure business continuity and is a law requirement as well. The workers operating on rig's, or platform, refinery or industrial plants must be every time protected to prevent injuries, to keep know-how safe, to avoid plant shutdown Starting from our skills on CCTV and security integration, we proudly present you #SAFETYCHECKER, the latest idea in terms of safety on the workplace born from the strategic partnership between 2B CONTROL and DRILLEREYE.



#SAFETYCHECKER will check in real-time if workers, operating in a critical area, are wearing their protective equipment properly, promptly signaling on your monitor, or smartphone, each unsafe behavior. #SAFETYCHECKER is running on Guardian, the surveillance solution powered by 2B Control, one of the most sophisticated software in the security and safety of the controlled areas. For more information, visit [www.2bcontrol.com](http://www.2bcontrol.com) or [www.drillereye.com](http://www.drillereye.com).

