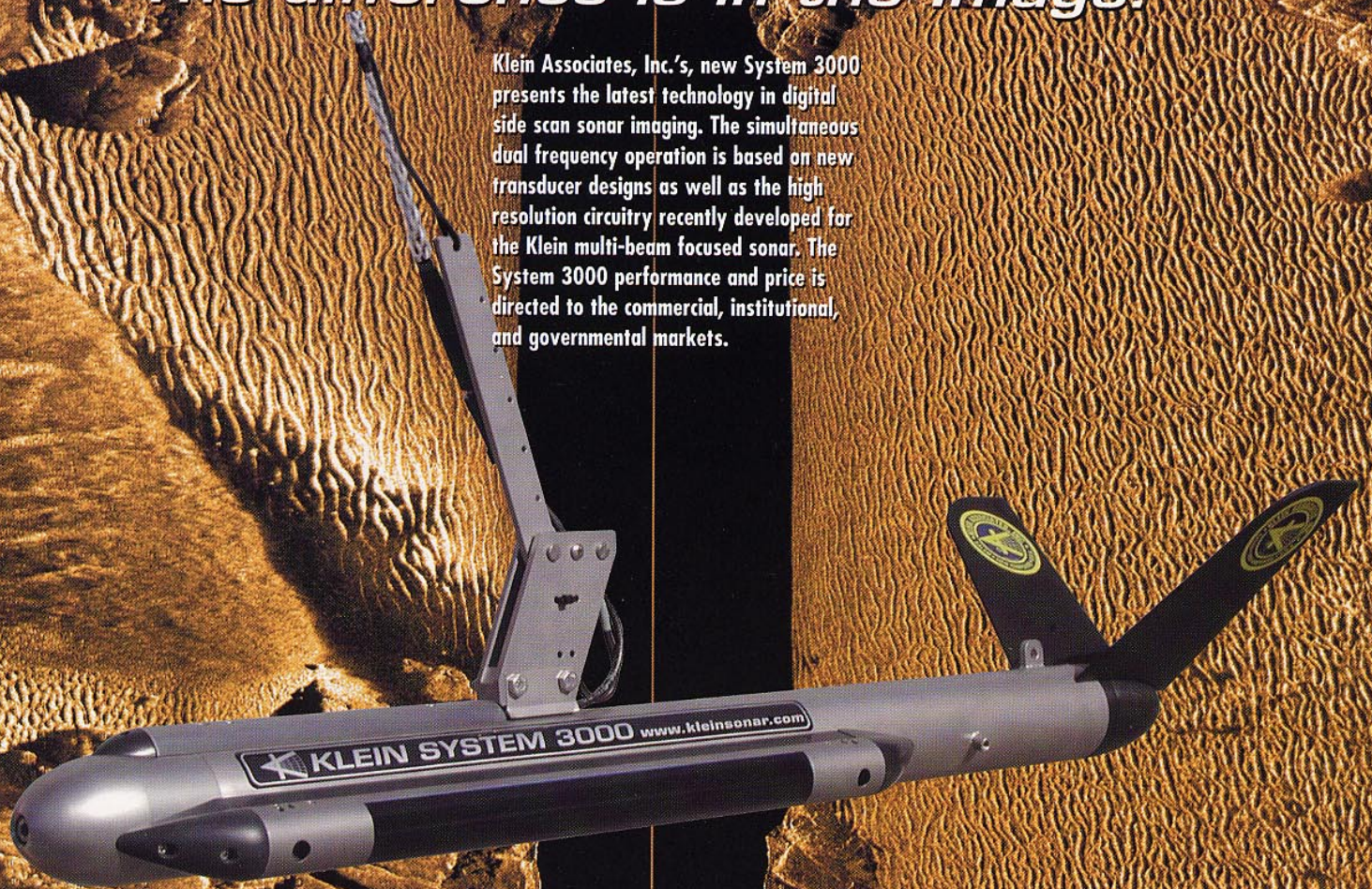




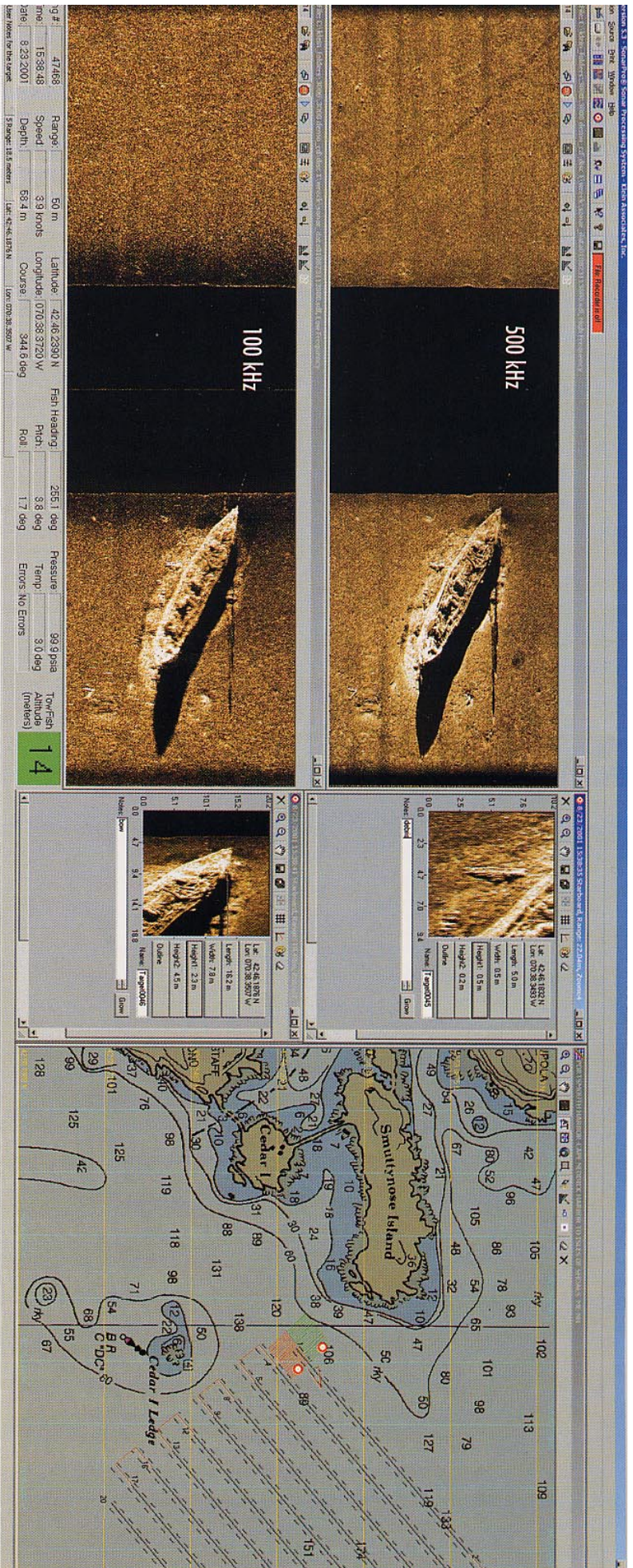
System 3000 Digital Side Scan Sonar

"The difference is in the Image!"

Klein Associates, Inc.'s, new System 3000 presents the latest technology in digital side scan sonar imaging. The simultaneous dual frequency operation is based on new transducer designs as well as the high resolution circuitry recently developed for the Klein multi-beam focused sonar. The System 3000 performance and price is directed to the commercial, institutional, and governmental markets.



- **ADVANCED SIGNAL PROCESSING AND TRANSDUCERS PRODUCE SUPERIOR IMAGERY**
- **COST EFFECTIVE, AFFORDABLE**
- **PC BASED OPERATION WITH SONARPRO® SOFTWARE, DEDICATED TO KLEIN SONARS**
- **SMALL, LIGHTWEIGHT, AND SIMPLE DESIGNS - EASY TO RUN AND MAINTAIN**
- **EASILY ADAPTED TO AUVS, ROVS, AND CUSTOM TOWFISH**



SPECIFICATIONS

Towfish

- Frequencies
- Transmission Pulse
- Beams
- Beam Tilt
- Maximum Range
- Depth Rating
- Construction
- Size
- Weight
- Standard Sensors
- Options
- Transceiver Processor Unit (TPU)**
- Operating System
- Best Hardware
- Outputs
- Navigation Input
- Power

ID #:	47468	Range:	50 m	Latitude:	42.46 2330 N	FSN Heading:	255.1 deg	Pressure:	99.9 psia	Tow-Fish	14
Time:	15:38:48	Speed:	3.9 knots	Longitude:	070.58 3720 W	Pitch:	3.8 deg	Temp:	3.0 deg	Altitude	
Date:	8/23/2001	Depth:	63.4 m	Course:	344.6 deg	Roll:	1.7 deg	Errors No Errors		(meters)	

Klein Sonar Workstation

- Best Operating System
- Sonar Software
- Data Storage
- Hardware
- Windows NT® & 2000® or equiv.
- SonarPro®
- Internal hard drive,
- optional devices available
- Industrial PC with technically advanced components

Tow Cables

Klein offers a selection of coaxial, Kevlar® reinforced, lightweight cables, double armored steel cables, and interfaces to fiber optic cables. All cables come fully terminated at the towfish end.

SonarPro® Software

Custom developed software by users and for users of Klein site scan sonar systems operating on Windows NT® & 2000®. Field proven for many years on Klein's Multi-Beam Focused Sonar Series 3000 Systems and adapted to the System 3000 single-beam system. SonarPro® is a modular package combining ease of use with advanced sonar features.

Best Modules

- Multiple Display Windows
- Survey Design
- Target Management
- Sensor Window
- Networking
- " Wizards "
- Main Program, Data Display, Information, Target Management, Navigation, Data Recording & Plying, and Sensor Display.
- Permits multiple windows to view different features as well as targets in real time or in playback modes.
- Multi-Windows for sonar channels, navigation, sensors, status monitors, targets, etc.
- Quick & easy survey set up with ability to change parameters, set tolerances, monitor actual coverage, and store settings.
- Independent windows permitting measurement, logging, comparisons, filing, classification, positioning, time & survey target layers, and feature enhancements. Locates target in navigation window.
- Displays all sensors in several formats (includes some diagrams) and responder set up to suit many frequencies and ping rates.
- Permits multiple, real time processing workstations via a LAN including "master and slave" configurations.
- To help operator set up various manual and default parameters.



KLEIN ASSOCIATES, INC.
 11 Klein Drive
 Salem, N.H. 03079-1249, U.S.A.
 Phone: (603) 893-6131
 Fax: (603) 893-8807
 E-mail: mail@kleinsonar.com
 web site: www.kleinsonar.com

Windows NT & 2000, Kevlar, and Kevlar - are registered trademarks of Microsoft Corp., Wial River Systems, Inc., and DuPont, respectively. SonarPro® is a registered trademark of Klein Associates, Inc.